



# Water Saver®

True Turf Type  
Rhizomatous  
Tall Fescue

**FACT– All tall fescues are NOT the same! RTF® tall fescue is a standout in research and development and data shows it is the only true Rhizomatous Tall Fescue. Beware of imitations!**

A trial was conducted to compare rhizome formation in a number of commercially available tall fescue varieties that claim to produce rhizomes. It is known that tall fescue plants sometimes make rhizomes or produce tillers that are often mistaken for rhizomes.

Data shows it is very clearly only 2 varieties, **Labarinth RTF®** and **F1B RTF®** plants consistently exhibited greater rhizome production than the other varieties.

Summary of the trial concluded:

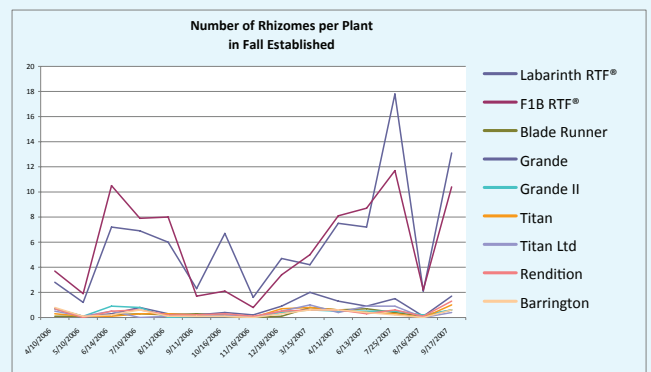
*RTF® varieties from Heritage Seeds/Barenbrug produce 20 times more rhizomes per variety than other so called "rhizomatous tall fescue" varieties.*

*These so called rhizomatous or rhizomatic claimed varieties produce the same amount of rhizomes as a regular tall fescue variety.*

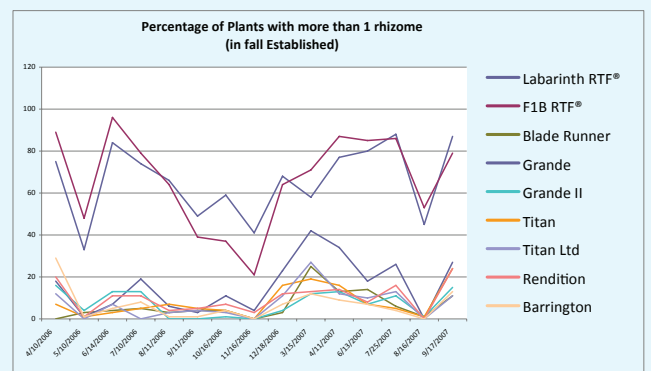
*The average length of rhizomes in Heritage Seeds/Barenbrug RTF® varieties increases as the plant matures, thus increasing the spread of the plant.*



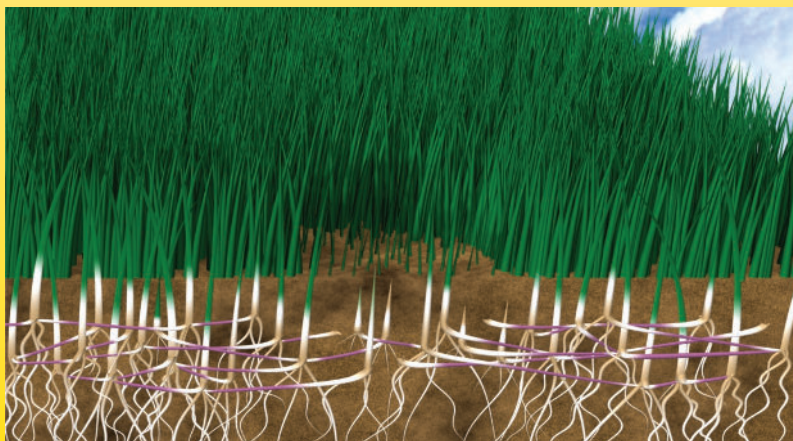
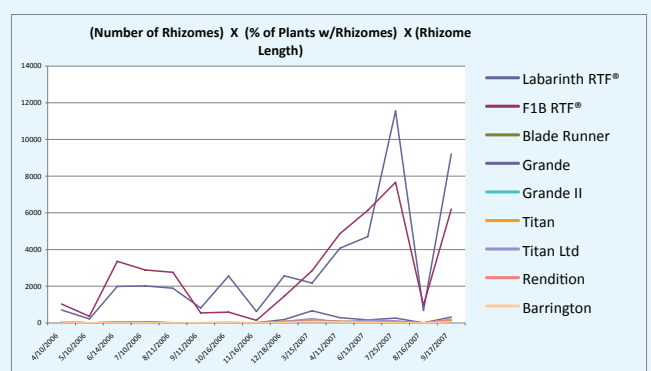
Graph 1. Only two varieties exhibited a significant number of rhizomes throughout the year.



Graph 2. Labarinth RTF and F1B RTF produce more rhizomes per plant than the other varieties.



Graph 3. The total amount of rhizomes produced by the RTF varieties in this trial was significantly greater than the other varieties.





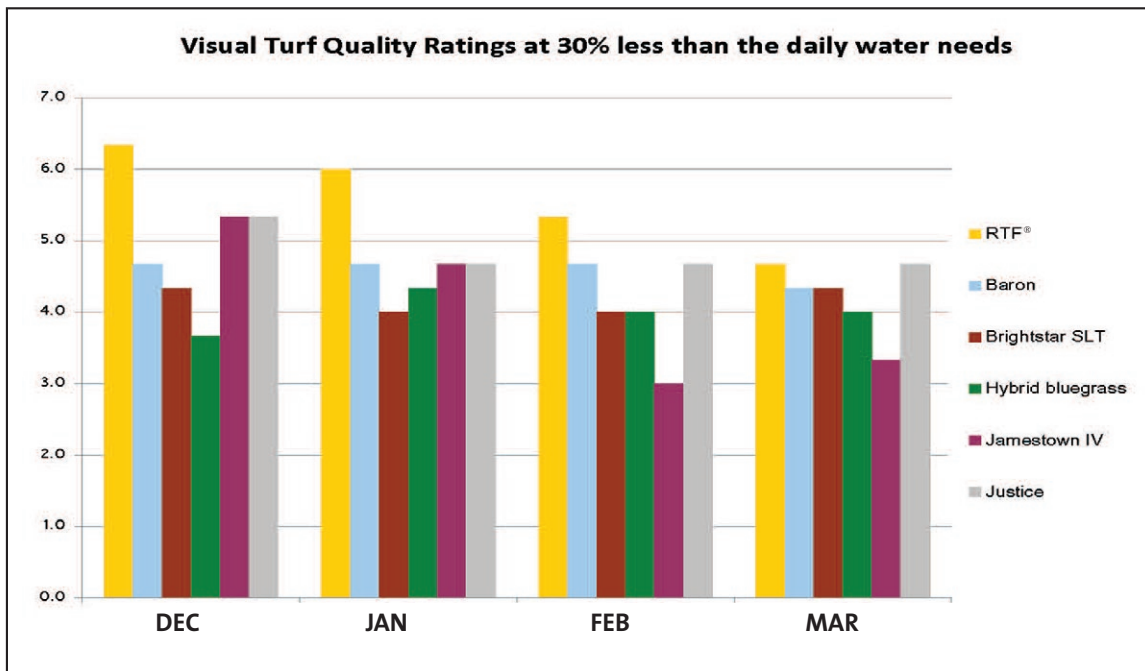
# Water Saver®

## Use less water with RTF®.



If water restrictions and local drought conditions cause you to panic about maintaining green turf during the summer months then choose RTF®.

Recent studies at New Mexico State University prove that RTF® maintained its high turf quality all summer long - even under 30% drought conditions. RTF® performed extremely well in this trial - and its performance was the best in the hottest months.



The graph above illustrates that under drought conditions RTF® is able to maintain its dark green color throughout the summer better than other varieties. The graph also shows you can save water! RTF® is able to stay lush and green under conditions where 30% less water was used. Tall fescue is recognized as being more drought tolerant than most other species due to its deep rooting ability. RTF® is one of the deepest rooting varieties available. Its roots can dig as deep as 6 feet - tapping into water not normally available to other varieties and species. In addition RTF® has been selected for drought and heat tolerance and is endophyte enhanced which gives it an advantage that is unparalleled in the industry.

**“Strathayr Turf Systems have been using Heritage Seeds RTF® seed for the last 5 years, and what stood out to me was RTF®’s ability to produce rhizomes way in excess of any other variety. So much so that I would say it would be the only, truly rhizomatous turf tall fescue on the market. With the rhizome nature and its ability to establish quicker, with noticeable extra winter growth than other tall fescues, means that we can cut sod earlier. This tall fescue has added a new dimension to our cool season turf varieties.”**

Frank Casimaty, Managing Director  
Strathayr Turf Farms.



For more information please contact  
StrathAyr Instant Lawn  
Tel: 03 6260 2388  
Email: [tas@strathayr.com.au](mailto:tas@strathayr.com.au)

